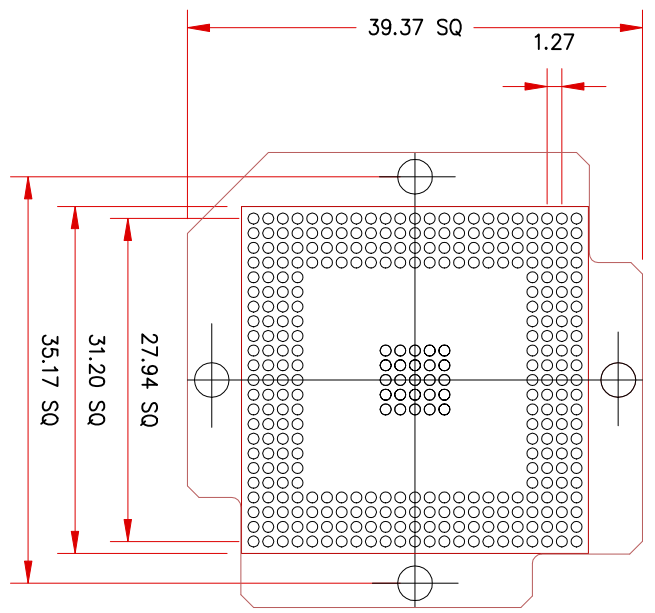
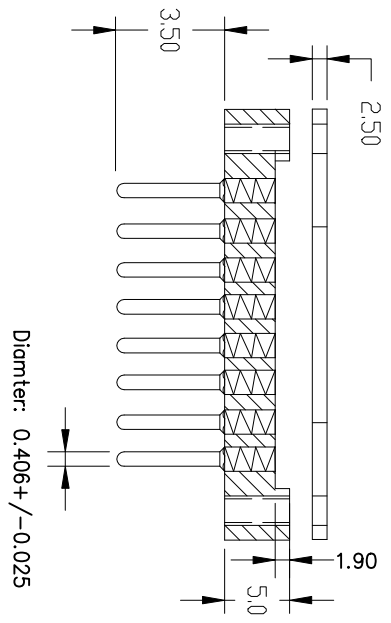


THE DRAWINGS AND INFORMATION CONTAINED HEREIN ARE THE EXCLUSIVE PROPERTY OF ACTEL CORPORATION AND ARE UNCLASSIFIED AND UNCONTROLLED INFORMATION UNLESS INDICATED OTHERWISE. THIS INFORMATION SHALL BE MAINTAINED IN STRICT CONFIDENCE, AND SHALL NOT BE RELEASED TO ANY THIRD PARTY WITHOUT THE EXPRESS WRITTEN PERMISSION OF ACTEL.



NOTES: Dim: mm

1. PIN MATERIAL: BRASS ALLOY 360, 1/2 HARD.
2. PIN FINISH: 10 μ" GOLD OVER 50 μ" NICKEL.
3. INSULATOR MATERIAL: FR-4 GLASS EPOXY
4. Contact: BeCu with gold plated

ACTEL CONFIDENTIAL

ECN NO.	REV.	DESCRIPTION OF CHANGE	EFFECTIVE DATE	ORIGINATOR
990138	0	Initial	4/30/99	Roy Kiang

E-TEC PART#: BPW329-1270-23AB11
E-TEC PATENTS PENDING

UNLESS OTHERWISE SPECIFIED DIMENSIONS ARE IN MILLIMETERS		PRODUCTION		ACTEL CORP. 500 B ARDEN AVENUE SUNNYVALE CA 94086		TITLE	
DECIMAL	ANGULAR	APPROVALS	DATE	SIZE	VENDOR NAME	ACTEL DWG. NUMBER	REV
XX ±0.10	±1°	DRAWN		B	E-TEC	1-07-09037	0
XXX ±0.05		CHECKED	4/27/99	B	BPW329-1270-23AB11		REV
XXXX ±0.03		RELEASED		Actel Part#:	SE-8G329-A	SCALE: NONE	SHEET 1 OF 2
MATERIAL	FINISH	SEE NOTES	DO NOT SCALE DRAWING				